

**CONSUL**

[www.consulcs.com](http://www.consulcs.com)

[admin@consulcs.com](mailto:admin@consulcs.com)



# CONSUL

## Company Profile

The Practice has over 35 years' experience, having been formed in 1990 by Pat Connolly and Pat O'Brien. The company was passed to Daniel Ross in 2019, an employee of Consul Chartered Surveyors for 10 years where he proved to be a valuable asset to the company. Daniel then bought in Christopher Evans to partner the company with him in 2019.

Most of our work is in the Public Sector for Local Authorities, Schools and Housing Associations. Where possible, we enter partnering contracts, which are open book. This means any savings we can make, through the benefits of effective organisation and working can be shared amongst the team.

We are a friendly and efficient consultancy that strives to form excellent working relationships with all our clients. This is demonstrated by the high level of repeat business we achieve and the number of new clients who come to us through recommendation. Here is a list of clients we deliver services to:

- Peabody Housing Association
- St Mungo's
- London Borough of Tower Hamlets
- London Borough of Bromley
- NHS
- Southern Housing
- Moat Housing Limited
- Orbit Housing Group

## Company Management Structure

Daniel Ross  
Director

Christopher Evans  
Director

Harry Spooner  
Associate Director & Quality Consultant





# CONSUL

Consul Chartered Surveyors aim to be innovators in the surveying industry by partnering with their clients to deliver a high quality, cost effective, reliable service.



The Practice provides a full range of surveying services

including the following:

- Building surveying
- Project co-ordination/management
- Employers Agent
- Principal Designer for CDM
- Party Wall Surveyors

## Company Services

- Building Surveying
- Partnering Advisor
- Client Representative roles
- Architectural Design and Planning
- Principal Designer for CDM
- Mediation
- Party Wall Matters
- Building Regulator Principal Designer Roles
- Dilapidations & Leasehold Documentation
- Condition Surveys / Specific Defect Reports
- Level 3 Building Surveys and Red Book Valuations
- Construction and legal dispute resolution



# CONSUL

## HEAD OFFICE

Regus Grosvenor Gardens  
52 Grosvenor Gardens  
London SW1W 0AU

## NORTH LONDON OFFICE

7 Topsfield Parade  
Tottenham Lane  
London N8 8PT

## SOUTHERN OFFICE

Consul Chartered Surveyors  
2 Clementina Crescent  
Haywards Heath  
West Sussex RH16 4ZP

E-mail:

[admin@consulcs.com](mailto:admin@consulcs.com)

[danielross@consulcs.com](mailto:danielross@consulcs.com)

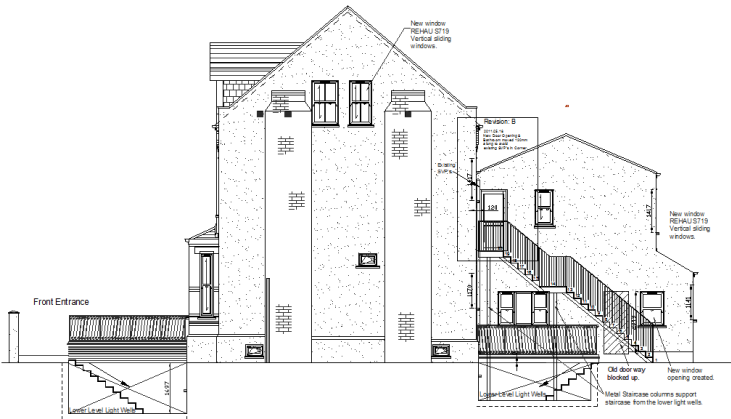
[chrisevans@consulcs.com](mailto:chrisevans@consulcs.com)

Office Tel: 020 3150 3516

Mobile Numbers:

Daniel Ross: 07534892123

Chris Evans: 07377141255



[www.consulcs.com](http://www.consulcs.com)

Company No: 05465526

VAT No: 907233931